

Институт Энергетических Исследований
Российской Академии Наук



**Угольная промышленность мира и России
в период 2000-2017 гг.: анализ, тенденции и
перспективы развития, импортозамещение**

Плаkitкина Людмила Семеновна

к.т.н., член-корреспондент Российской Академии Естественных Наук
Руководитель Центра исследования угольной промышленности мира
и России ИНЭИ РАН

SOLIDS Russia 2018
29.05.2018 г.

Energy Research Institute of
Russian Academy of Sciences



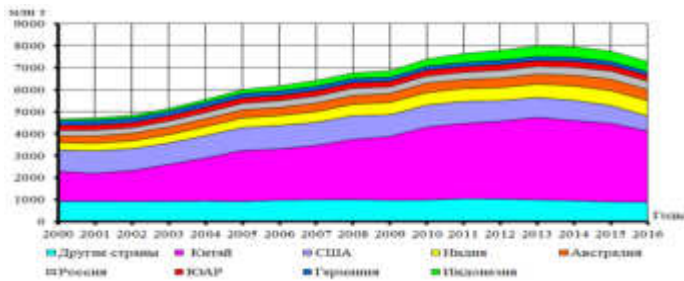
**Coal industry of the world and Russia in the
period 2000-2017: analysis, trends and prospects,
import substitution**

Liudmila Plakitkina

PhD (Engineering), Corresponding Member of the Russian Academy of Natural Sciences,
Head of the Research Center for Coal Industry in the World and in Russia,
Energy Research Institute of Russian Academy of Sciences

SOLIDS
Russia. Moscow
29.05.2018

Total World Coal Production



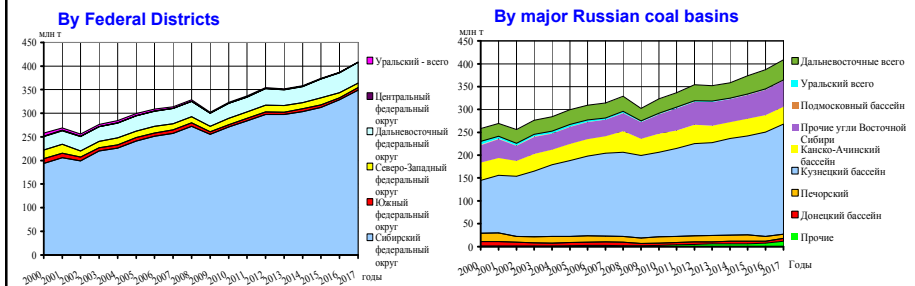
Total World Coal Production in 2016 year is more than 7.3 Billion tonnes (+55.6% then in 2000; - 9.1% then in 2013). Russia's share in global coal production in 2016 - 5,2%.

Major World Total Coal countries producers in 2016 year are:

- 1) China (3243 Mt), 2) USA (672 Mt), 3) India (708 Mt), 4) Australia (503 Mt), 5) Indonesia (461Mt),
- 6) Russia (386 Mt), 7) South Africa (257 Mt), 8) Germany (176 Mt)

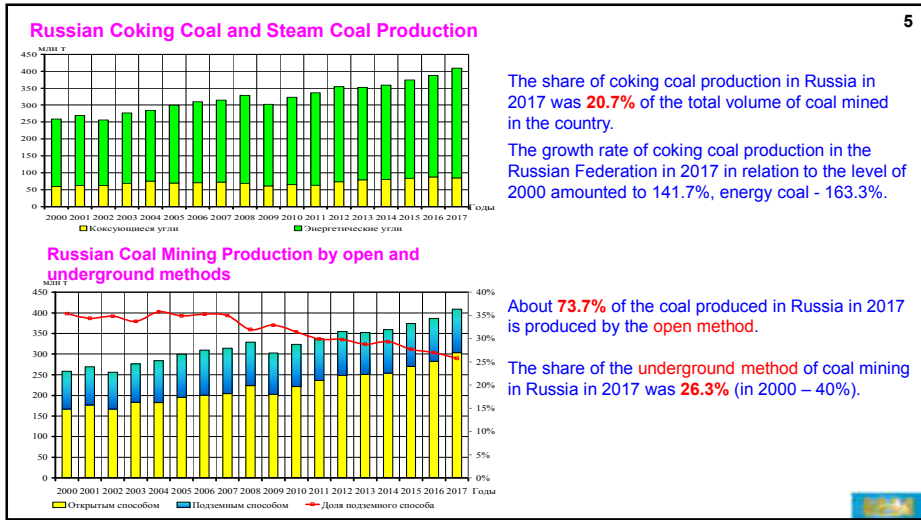
3

Russian Total Coal Production

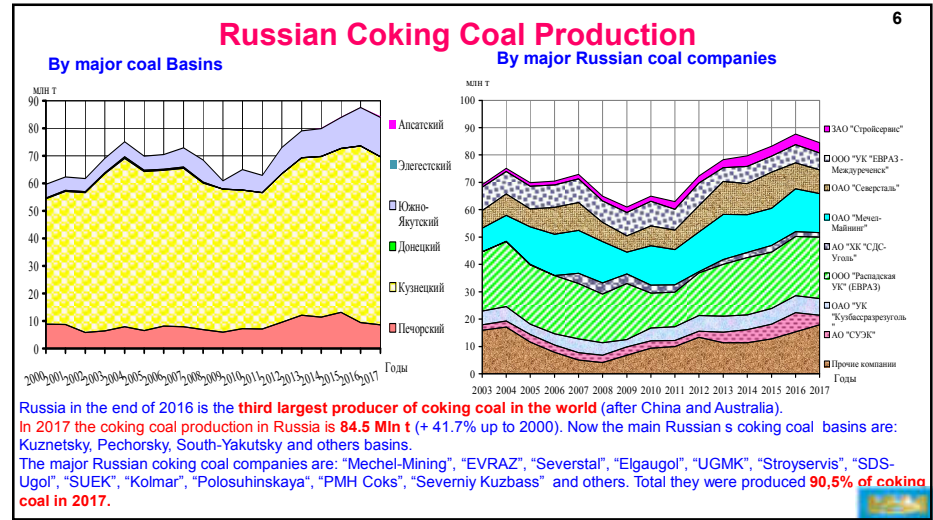


In Russia, which holds the 11 place for coal mining in the world and has 5.5% of the world's coal reserves (about 200 billion tons), in 2016, about 4.5% of the world's coal production was produced. Total Russian coal production reached a level of 408,1Mt in 2017, achieving a growth of 58.4% since 2000. Currently, coal production in Russia is carried out in 7 federal districts, 25 subjects of the Russian Federation and 85 municipal entities, of which 58 are coal-mining territories on the basis of city-forming coal enterprises. Within the Russian Federation, 22 coal basins and 129 separate deposits are being developed. The fund of operating coal-mining enterprises of the Russian Federation, as of 01.01.2018, has 180 enterprises (mines - 61, sections - 119). As a result of the restructuring of the coal industry and the privatization of its assets in the late 1990s, the entire volume of coal mining is currently carried out by joint-stock companies with a private ownership.

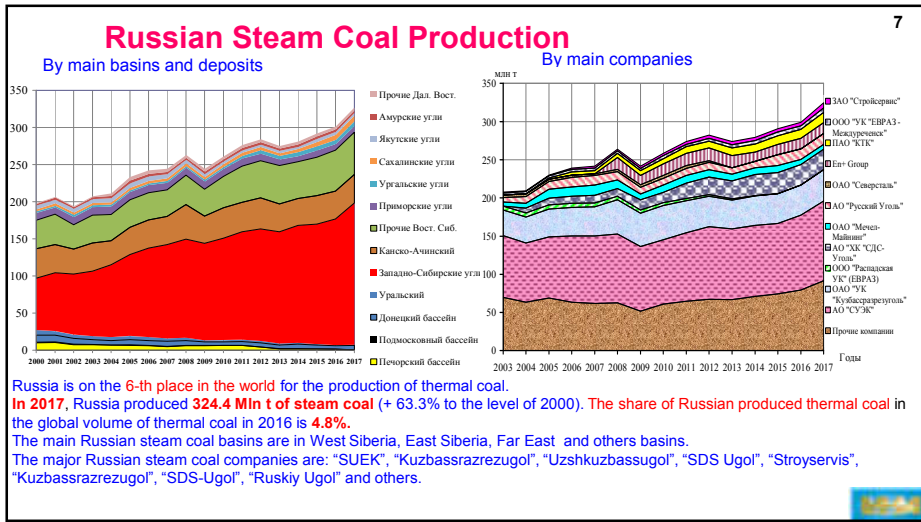
4



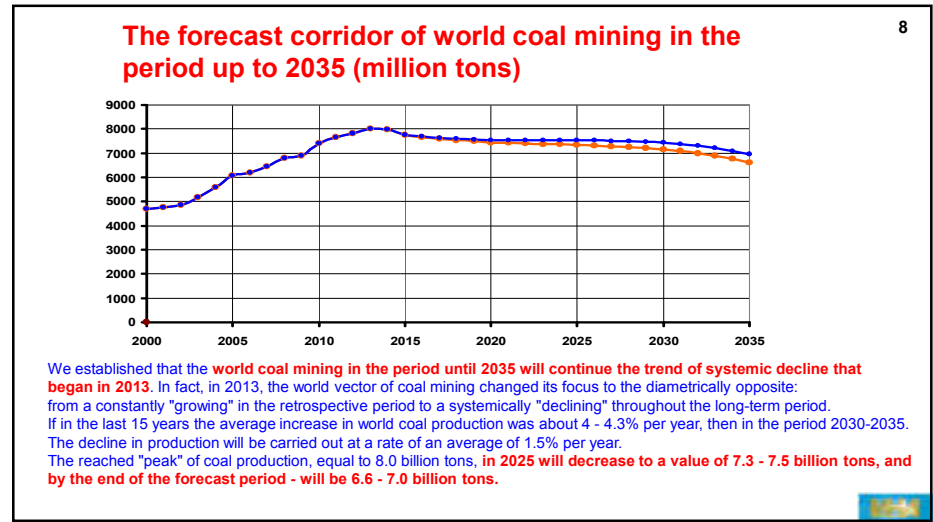
5



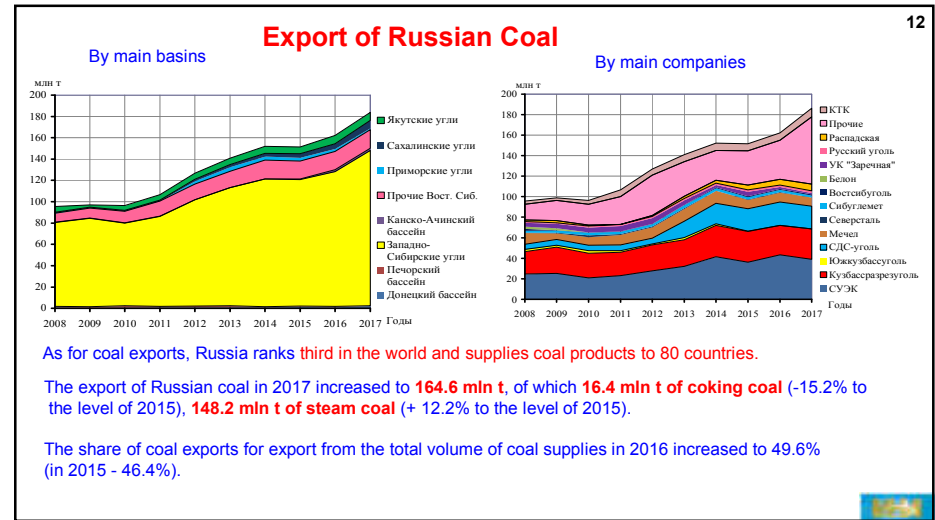
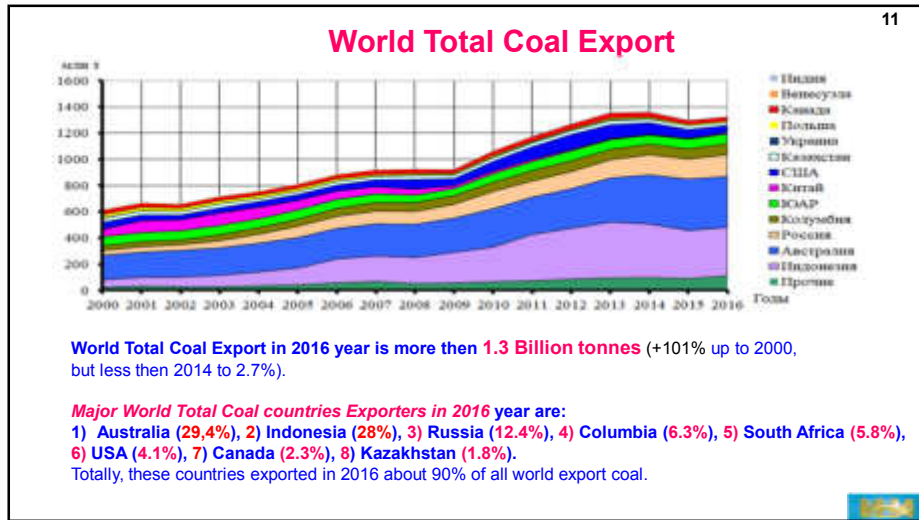
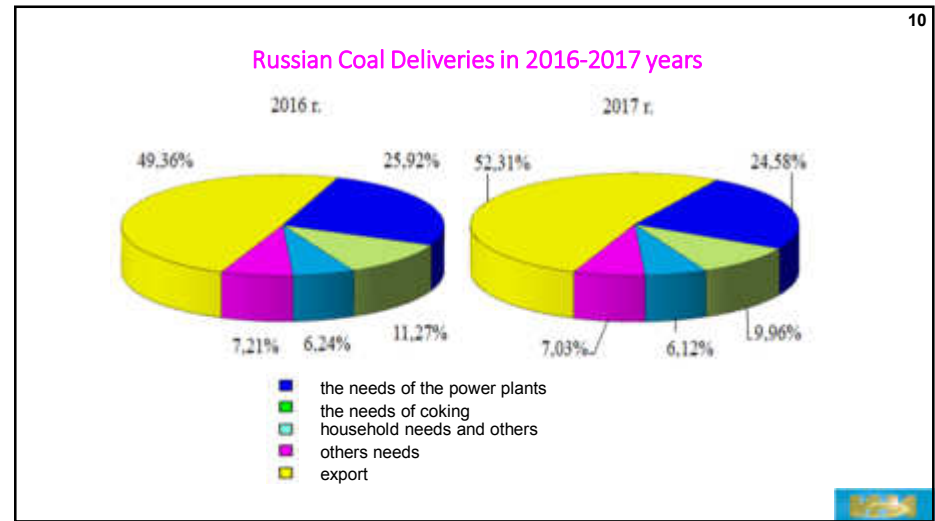
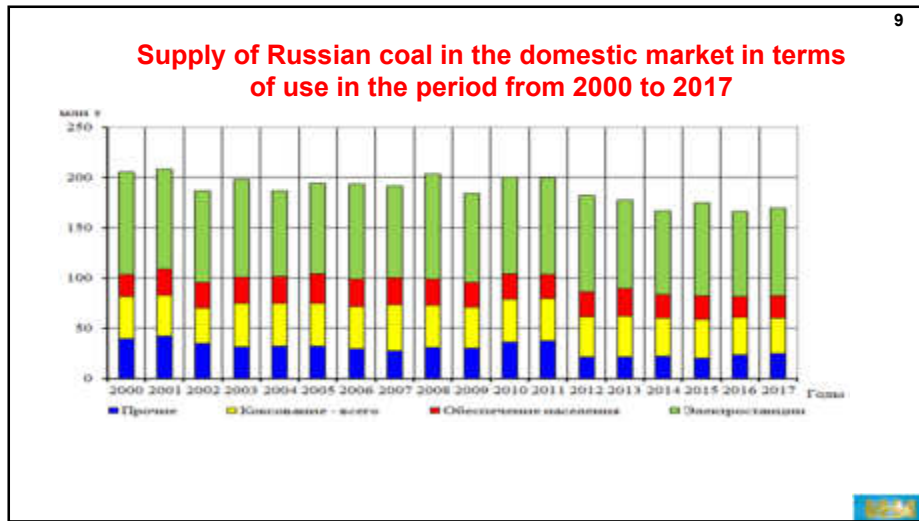
6

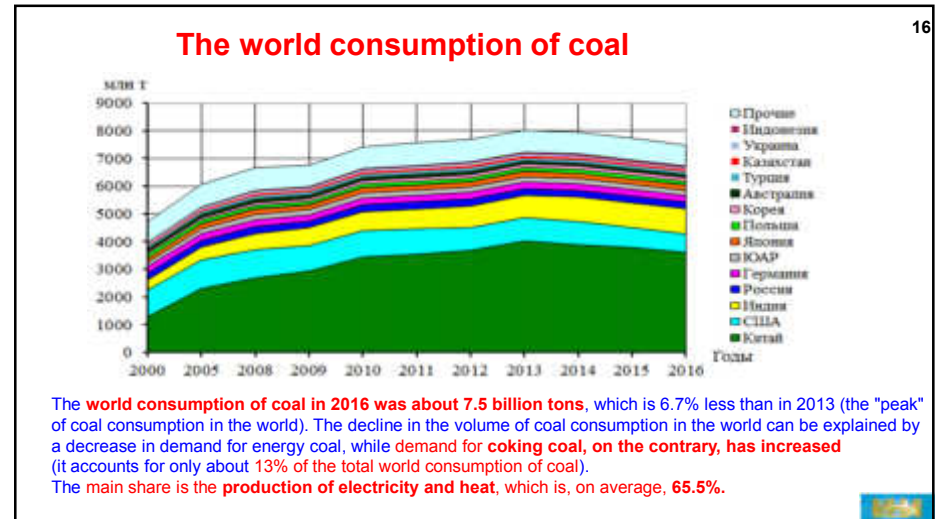
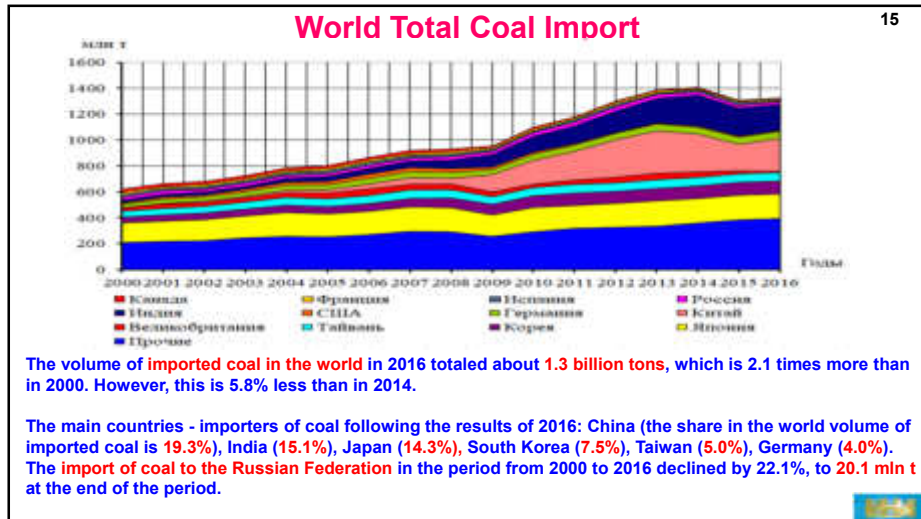
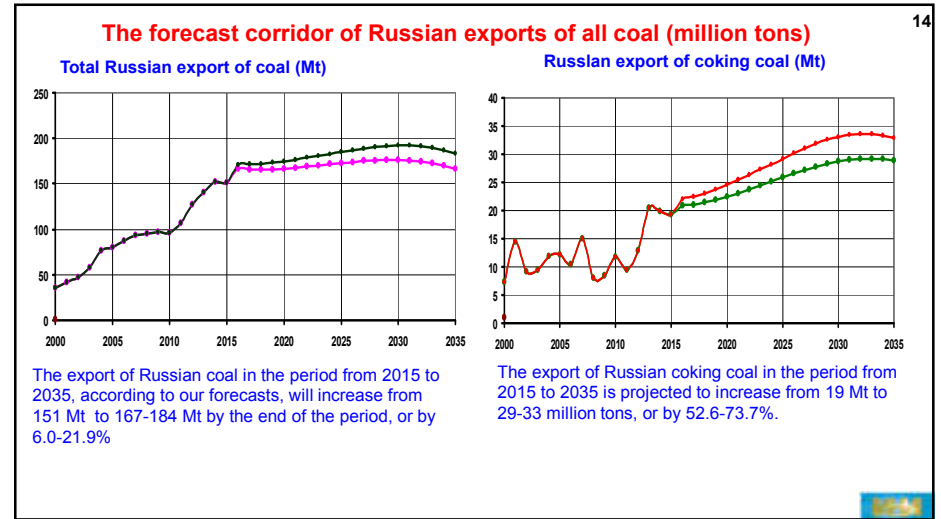
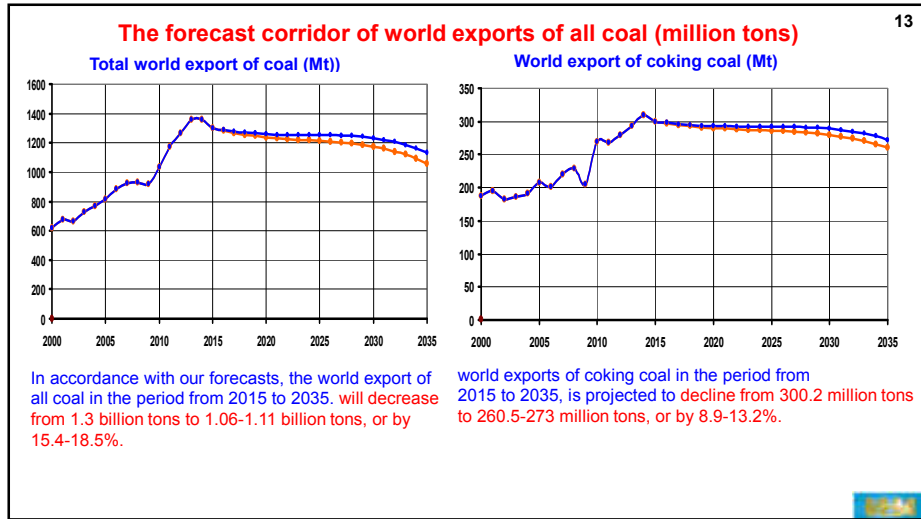


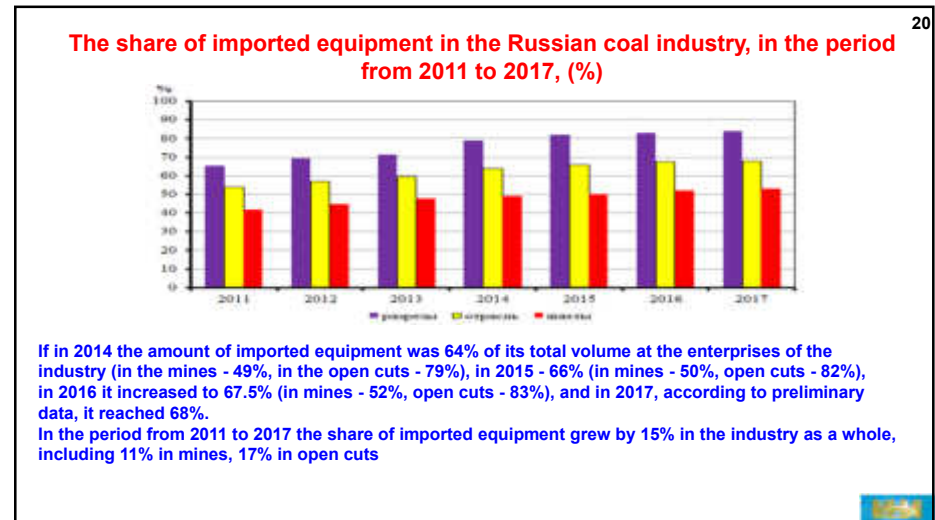
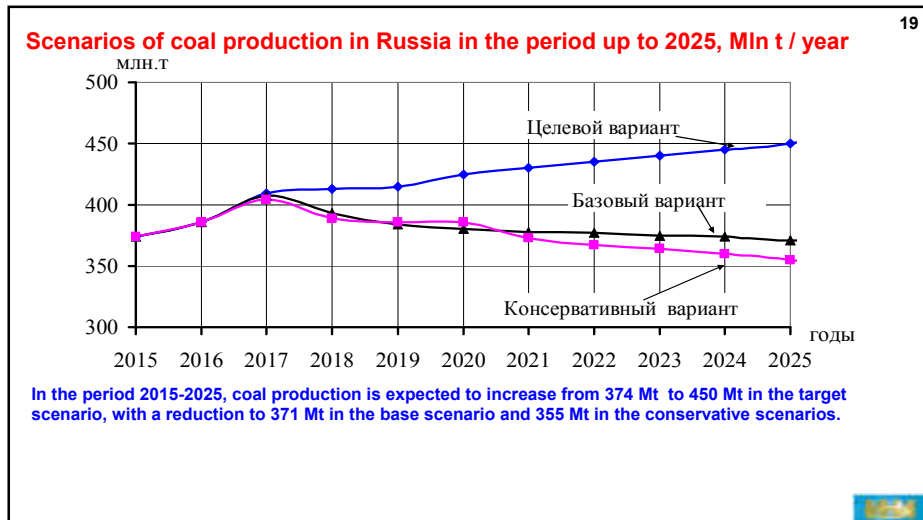
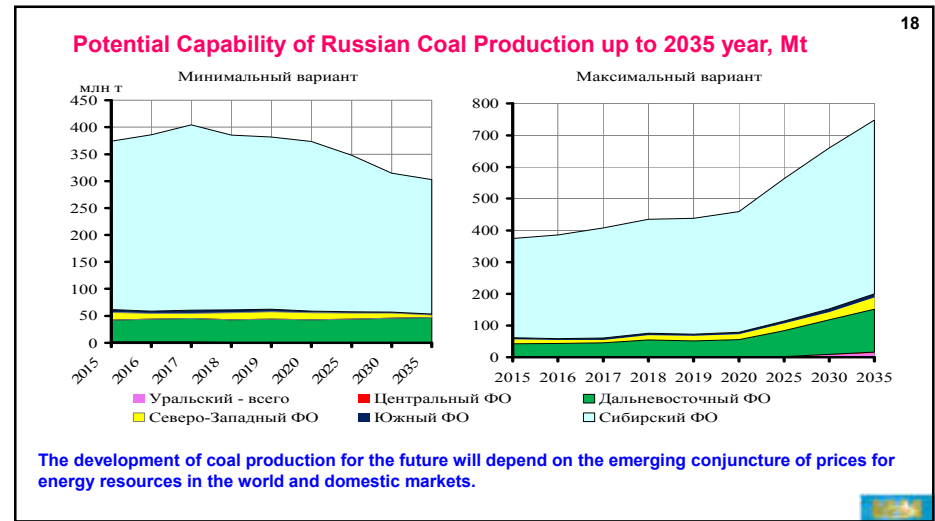
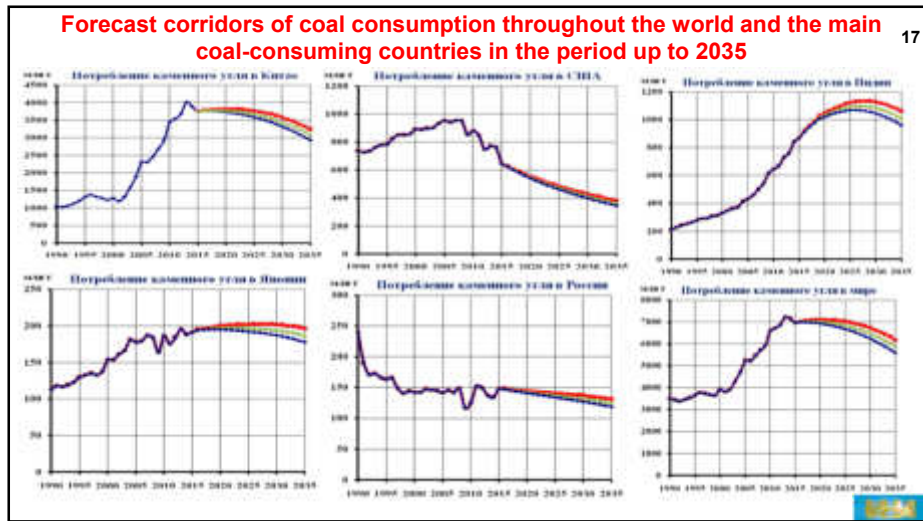
7



8







Thank you for attention

luplak@rambler.ru
+7 (499) 123-62-66

